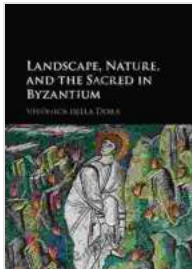


# Landscape, Nature, and the Sacred in Byzantium



## Landscape, Nature, and the Sacred in Byzantium

by J. Paul Guyer

★★★★★ 5 out of 5

Language : English  
File size : 20333 KB  
Text-to-Speech : Enabled  
Screen Reader : Supported  
Enhanced typesetting : Enabled  
Word Wise : Enabled  
Print length : 312 pages



In the heart of the medieval world, the Byzantine Empire stood as a beacon of cultural and spiritual brilliance. Its vast territories encompassed a diverse array of landscapes, from towering mountains and lush forests to shimmering seas and fertile plains. Within these landscapes, the Byzantines forged a profound connection between nature and the sacred that would shape their civilization.

## Nature as a Reflection of the Divine



For the Byzantines, the natural world was not merely a backdrop for human existence but a vibrant tapestry woven with divine threads. They believed that the beauty and Free Download of nature mirrored the perfection of God's creation. From the towering peaks of Mount Athos to the tranquil shores of the Aegean Sea, each landscape element held symbolic and spiritual significance.

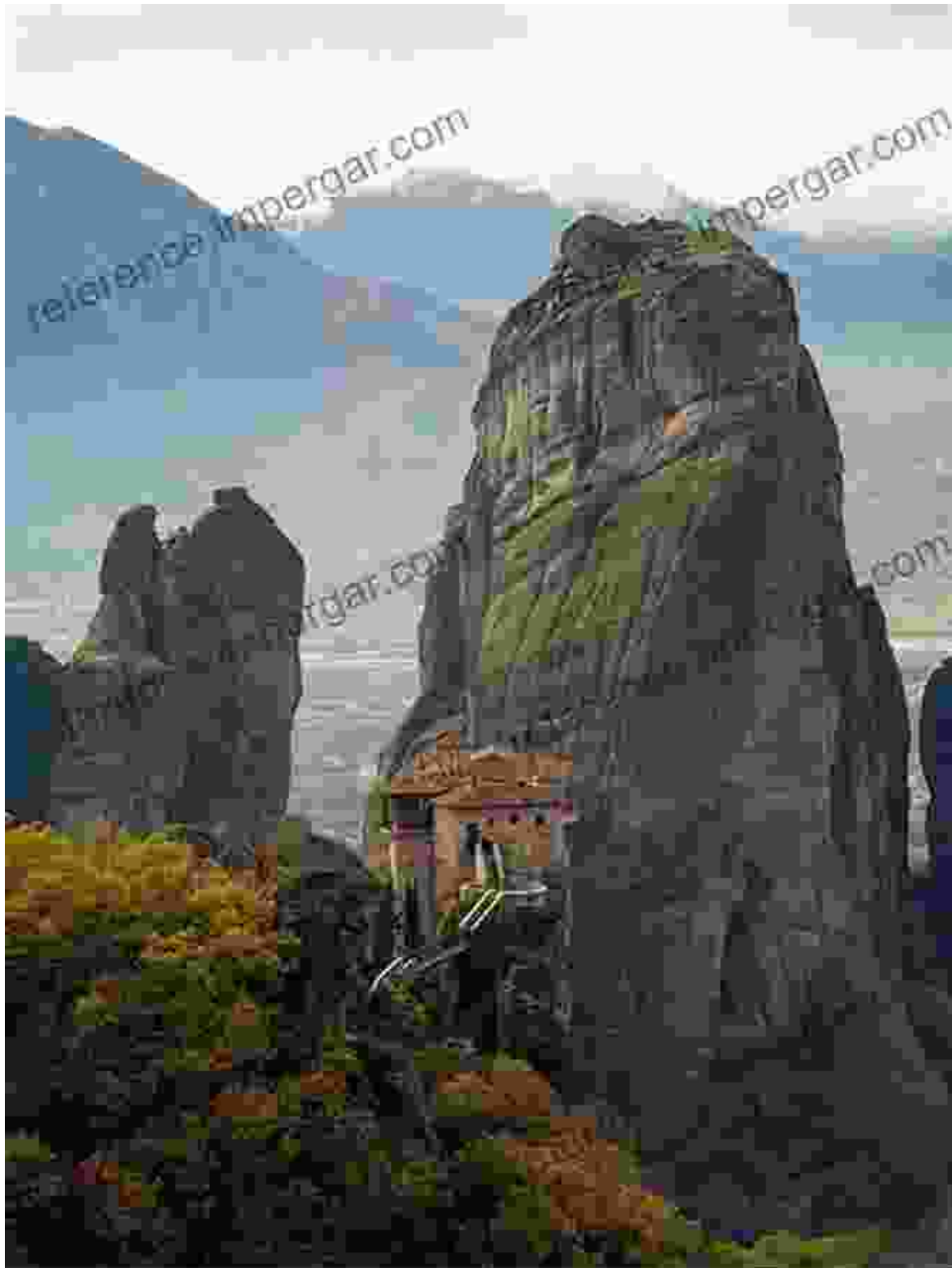
### **Sacred Sites and Pilgrimage**



Pilgrimage was an important aspect of Byzantine spirituality, with people traveling to sacred sites to deepen their connection with the divine.

The Byzantine landscape was dotted with sacred sites that attracted pilgrims from far and wide. These sites, such as the Holy Land, Mount Athos, and the Hagia Sophia, were believed to possess a special connection to the divine. Pilgrims would often undertake arduous journeys to visit these sites, seeking spiritual renewal and proximity to God.

## Monasteries as Havens of Spirituality



The Byzantine landscape was also home to numerous monasteries, which served as havens of spirituality and learning. These monasteries were often located in remote and picturesque settings, providing an ideal environment for contemplation and communion with nature. Monks and nuns living in these monasteries played a vital role in preserving Byzantine culture and spirituality.

## Art and Architecture as Expressions of the Sacred

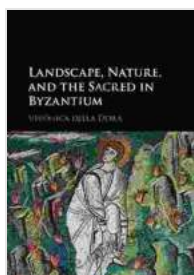


Byzantine art and architecture often reflected the beauty and spirituality of the surrounding landscapes.

The Byzantine landscape left an enduring impression on the empire's art and architecture. Byzantine artists and architects sought to capture the beauty and sacredness of nature in their creations. Mosaics, frescoes, and

icons depicted idyllic landscapes, while churches and monasteries were often adorned with intricate carvings and sculptures inspired by natural forms.

The Byzantine Empire's landscapes were not merely physical spaces but sacred realms where the natural and spiritual worlds intertwined. Through pilgrimage, monasticism, and artistic expression, the Byzantines cultivated a profound connection with their surroundings, perceiving nature as a reflection of the divine. By exploring the landscapes of Byzantium, we gain a deeper understanding of the spirituality and culture of this remarkable civilization.



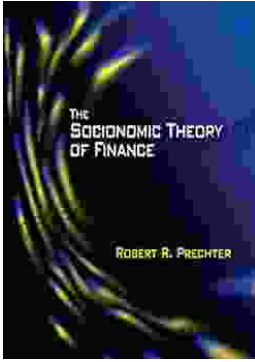
## Landscape, Nature, and the Sacred in Byzantium

by J. Paul Guyer

★★★★★ 5 out of 5

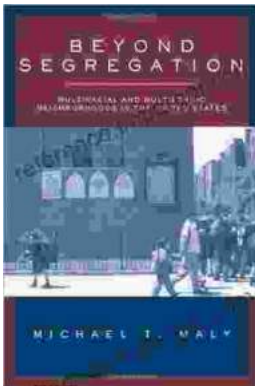
Language : English  
File size : 20333 KB  
Text-to-Speech : Enabled  
Screen Reader : Supported  
Enhanced typesetting : Enabled  
Word Wise : Enabled  
Print length : 312 pages





## **Unlock Your Financial Future: Discover the Transformative Power of The Socioeconomic Theory of Finance**

In a tumultuous and ever-evolving financial landscape, understanding the underlying forces that drive market behavior is paramount. The Socioeconomic Theory of Finance (STF)...



## **Beyond Segregation: Multiracial and Multiethnic Neighborhoods**

The United States has a long history of segregation, with deep-rooted patterns of racial and ethnic separation in housing and neighborhoods. However, in recent...